



# MiC Workshop on Lifting, Logistics and Transport of Modules

---

**Ir Franco K. W. CHEUNG**

**Assistant Director (Project Management)**



HONG KONG  
HOUSING SOCIETY  
香港房屋協會

# Lifting Operation Safety The Developer's Context



生命第一  
LIFE FIRST

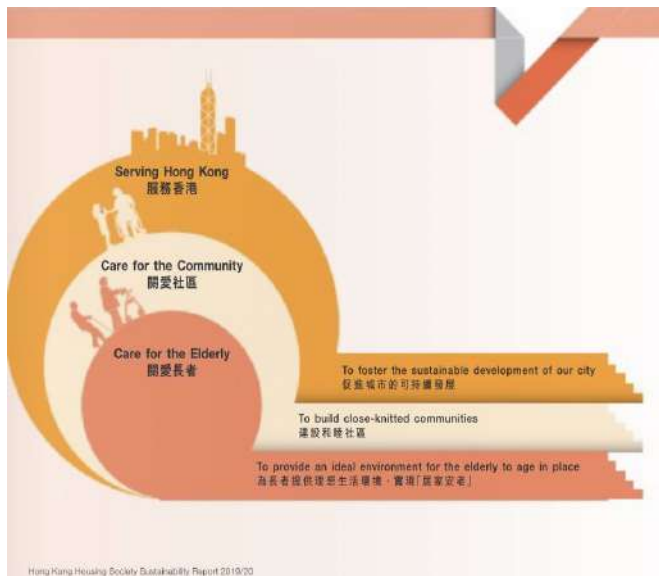
Disciplined Services Quarters

Ten Degrees Croydon

InhoCell



## HKHS Sustainability Report 2020



### Sustainability



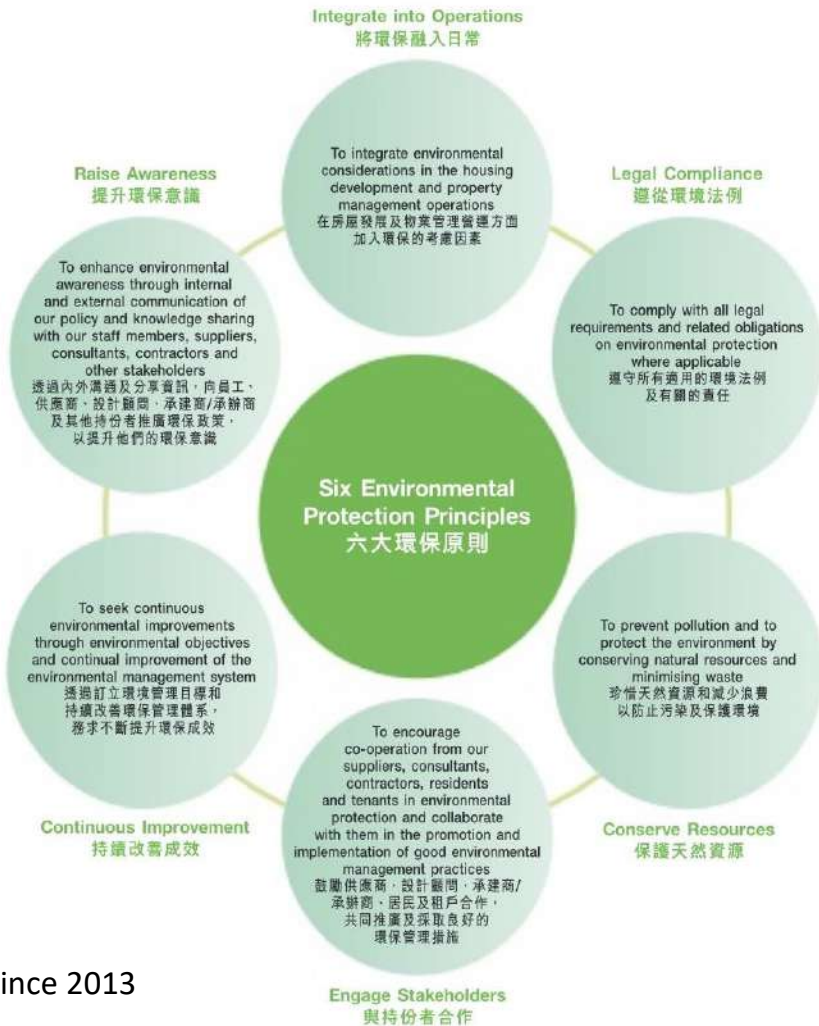
BUSINESS ENVIRONMENT COUNCIL  
商界環保協會

BEC Low Carbon Charter : 13% carbon reduction by 2030 (Baseline 2012) for HKHS Offices and Existing Estates/Assets







HKGBRC BEAM PLUS  
綠建築評

BEAM / BEAM Plus accreditation : 14 development projects awarded “Platinum (8)”, “Gold (4)” and “Bronze (2)” ratings since 2013





# HKHS Current Development Projects

-  Concrete MiC Construction
-  Steel MiC Construction
-  Volumetric Precast Bathroom/Kitchen (VPB/VPK) Construction
-  Conventional Construction



**Jat Min Chuen (松悅樓) - Steel MiC**



**Hung Shui Kiu Phase 1A - Concrete MiC**



**VPB/VPK Construction**

**Ting On Street**



**Shek Pai Wan Road**



**ANDERSON ROAD QUARRY SITE R2-2 & R2-4**



# Design for Safety

Supply Chain

Design

Government's  
Incentive

Material

Users Perception  
and Acceptance

## Success of MiC

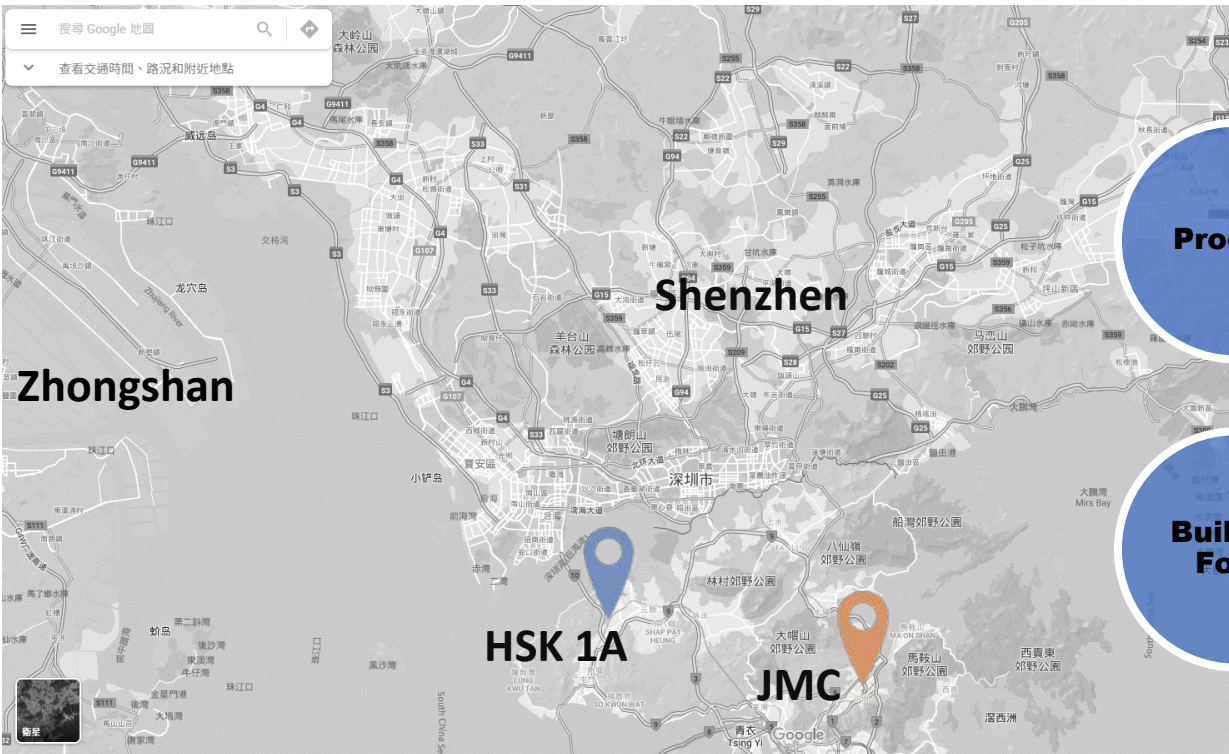
Building Height

Building Type

Procurement

Project Location





**Location**

**Product**

**Proximity**

**Site Selection for MiC Projects**

**Building Form**

**Logistic**

**Scale**

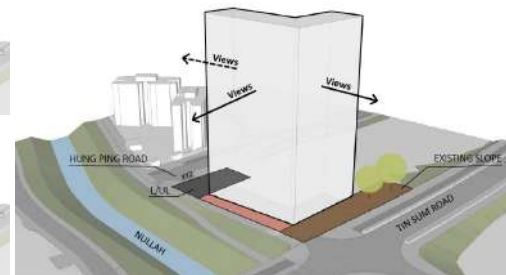
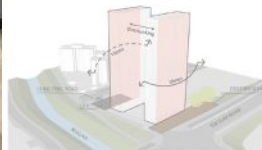
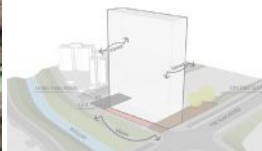


# Hung Shui Kiu Phase 1A - Concrete MiC



## Site Selection

- Sub-Urban Area – not congested with low density surroundings
- Close to mainland
- Accessible for MiC logistic
- Small scale for pilot project
- Single rectangular block with 300 units
- SSF product with typical units

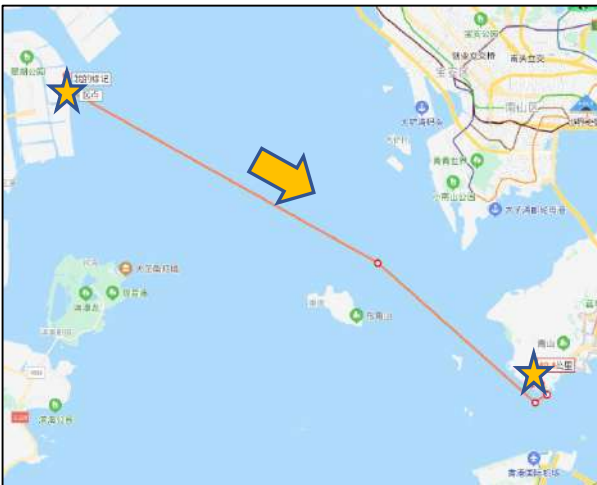




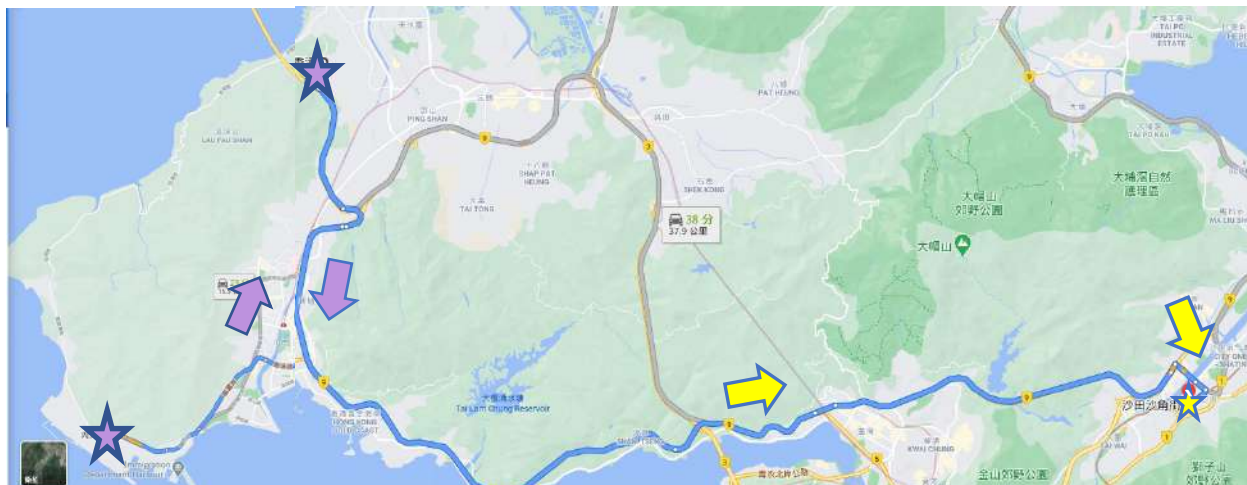




## Jat Min Chuen – Logistic Design for MiC Delivery Route



**1. Zhong Shan Fabrication Yard → Tuen Mun River Trade Terminal**



**2. Tuen Mun River Trade Terminal to Ha Tsuen Intermediate Storage Yard**

**3. Deliver the MiC Units from Intermediate Storage Yard to Jat Min Chuen when required.**

### Progress Tracking Functions



#### Survey Assistance

The software provides various tools and guides to help surveyors conduct their work better and easier.



#### Efficient Filing System

A Filing System based on the needs and habits of condition survey work.



#### Common Platform

The confusions and misunderstandings created due to the lack of a common platform can be reduced by using our software.



# Safety Management Framework for MiC Projects

## Advise & Audit



- **Leadership in Safety Promotion**
- **Reference Materials for Lifting Operation**
- **DfMA Designer Course**
- **Construction Site Safety Auditing Scheme**

## Design and Administration Consultant Team

- **Statutory Compliance**
- **Engineering Safety Supervision**
- **Resident Site Safety Officer**

## Construction Management Team (HKHS)

- **360° Design and Construction Coordination**

## MiC Contractor

- **Independent Heavy Lifting Specialist**
- **Site Management with Certificate in MiC Unit Installation from CIC**
- **Safety Training Course for Construction Workers of Specified Trades (Silver Card Courses)**



## Construction 2.0



**MiC provides a great degree of production quality control, and can improve construction productivity, safety and sustainability.**

**(CIC)**

**Thank You**

